

APPLICATION

It is widely applied in power inspection, oil pipeline inspection, PV pipeline inspection and other industries, greatly improve inspection efficiency.

GDU-Tech Co.,Ltd



Facebook
@GDU



0086 755 8656 5514



www.gdu-tech.com
sales@gdu-tech.com



Room 1005, 10th Floor, Tower 1, Novel Park,
4078 Dongbin Road, Nanshan District, Shenzhen, China

Notes: This brochure provides general information only and may be subject to change at any time without notice.



High-end, Professional UAV Pioneer
New Era of Night Vision



PDL-1K

GDU-Tech Co.,Ltd

PDL-1K Dual-sensor Camera

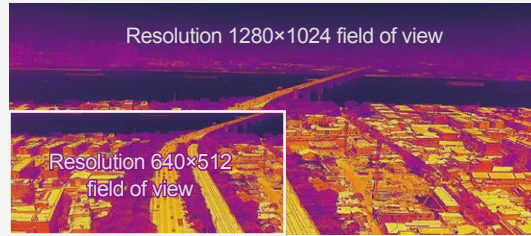
It adopts a 1K high-resolution self-developed infrared detector, which is 4 times the resolution of 640*512 infrared in the market, which is convenient for infrared detection under special environmental conditions. Defect detection and identification can effectively improve the infrared inspection level of high-voltage AC and DC transmission lines and the defect identification accuracy of AI algorithm, which can be widely used in industries such as electric power inspection, oil pipeline inspection, and smart fire protection, it helps users to open efficient day and night operation modes.



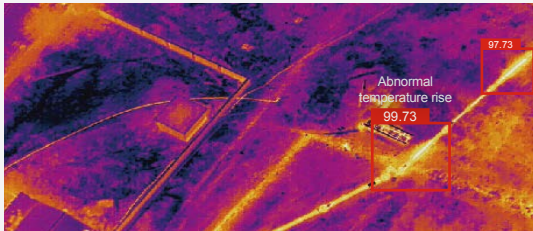
- 01 1K thermal camera, mega pixels**
Infrared effective pixels 1280×1024, industry-leading, providing valuable insights



- 02 Bigger vision, More efficient**
Wide field of view, wider picture, any details can be caught at a glance



- 03 Metal Package, accurate temperature measurement**
It adopts a metal-encapsulated detector with higher imaging sensitivity, the equivalent noise temperature difference NETD≤30MK, the imaging is clearer, and the temperature measurement is clearer



- 04 Dual channel, day&night detection**
Infrared and visible light dual channels, enabling 24-hour uninterrupted clear imaging



TECHNICAL SPECS

PDL-1K		
Weight	≤1200g	
Installation method	Camera gimbal all-in-one, detachable	
Dimensions	178mm×157.5mm×193.3mm	
Output interface	60pin port	
Gimbal		
3-axis stabilization system	Pan, roll, tilt	
Structural limit	Pan	-330°~+330°
	Roll	-70°~+70°
	Tilt	-135°~ +45°
Control angle	Pan	-270°~+270°
	Tilt	-90°~+30°
Max rotation speed	100°/s (adjustable)	
Stablization accuracy	≤ 0.01°	
Camera		
Focal distance	Infrared	14mm
	Visible light	12.8mm
FOV	Infrared	57.5°×47.4°
	Visible light	FOV63.4°
Photo resolution	Infrared	1280×1024
	Visible light	8000×6000 48MP 5496×3672 20.18M
		3:2 5472×3648 19.96MP 16:9 5472×3078 16.8MP
Video resolution	Infrare	1280×1024
	Visible light	4K: (3840×2160) 30fps
		FHD: (1920×1080) (30,60)fps
IR temp range	-20°C~150°C; 0°C~550°C; Accuracy: ±2°C or ±2%(Take max value)	
Image/video storage mode	JPG/MP4	
Storage card type	MicroSD (max 128GB, transmission speed is up to UHS-I Speed Grade 3 Micro SD card)	
Stable power consumption	≤12W	
Work temp.	-20°C~55°C	
Storage temp.	-20°C~65°C	